

ProStore®

Intralogsitics and warehouse management

ProStore® Modules

- Strategy Engine
- Good Receipt
- Quality Assurance
- Warehouse Task
- Production
- Paperless order picking
 - Multi Order Picking
 - Pick by Light
 - Pick by Voice
 - Pick by Vision
- Order Management
- Forklift Control
- Packing | Shipping
- Inventory
- Traceability
- Control Station

- Resource Planning
- Material Flow Control
- Material Flow Visualization
- Basic Function
- Mobil Apps
- Logistics Intelligence

Features and benefits

- Focus on logistics 4.0
- Flexible and modular software structure
- Completely Web 2.0 enabled
- Multi stock handling
- Multilingualism
- Perfect adaptation to company specific processes
- Extensive customizing

- RFID integration
- Configurable dialogs
- Cloud enabled
- Flexible interfaces with ProGate
- Fully integrated security concept
- Irrespective of the sector

System-technical conditions

- Server: Unix, Linux or Windows with Oracle database and various application Server
- Client: Webbrowser



Modern software, partnership and trust
create successful solutions.



Please contact us. We are looking forward to hearing from you.

TEAM GmbH

Hermann-Löns-Str. 88
33104 Paderborn

Fon +49 5254 8008-0

Fax +49 5254 8008-19

Mail team@team-pb.de

Web www.team-pb.de

ProStore®

Intralogsitics and warehouse management

Organizing the flow of goods and materials within a company is a highly complex task. If smooth internal workflows are to be guaranteed, the required goods must be made available at the right time and place, in the right quantities and in the right quality too. Modern information and communication technologies provide effective support for intralogsitics processes.

This is where ProStore® comes in. It optimizes logistical workflows within the company and provides the basis for maximum transparency of the internal flow of goods.

ProStore® uses modern Oracle-based technology concepts, also incorporating service oriented software architectures and web services. ProStore® creates the optimum environment for the use of future oriented solutions to provide the highest benefit for the user.



ProStore®

Intralogistics and warehouse management

ProStore® is a modular standard software system for all warehouse management and material flow control tasks.

ProStore® offers the highest level of scalability and integration. This is possible by the use of modern software technologies.

The customization on individual requirements is largely mapped with the parameterization in the software.

Dialog contents are flexibly set in ProStore® by configuration to the respective external requirements.

This applies, among other things, to the variable definition of target languages.

Associated applications such as SAP, Navision and the Oracle E-Business Suite, as well as subordinate controls are integrated via modern interface concepts.

ProStore® creates the perfect basis for optimum implementation of market requirements with its wide range of function options.

These include integration of a proprietary forklift control system, paperless order picking via pick by

vision, pick by voice, multiorder picking, connection of automatic sorters, RFID integration and variable mobile computing concepts.

ProStore® is available in specific configurations for various industries, including the food processing sector, the retail trade and also port operators.

The target system can be designed flexibly to provide the desired system resources. If required, high availability can be guaranteed 365 days a year.

The optimum resource planning and utilization in the logistics process is at the heart of any successful and efficient logistics application.

In order to fulfil these requirements, TEAM is offering the ProStore® modules **Control Station** and **Resource Planning**.

These components allow upcoming daily requirements in terms of order pickers or forklift drivers to be identified at any time and the necessary measures to be instigated, just to name one example.

Ease of operation, combined with the ability to react flexibly to unforeseen events, creates a high level of user acceptance.

The **Control Station** displays the current utilization rate, with a more detailed view of individual areas of operations, such as order picking or loading.

Users can insert, arrange and scale the units of information entirely as they wish, with visualization provided in Rich Internet Application technology.

The additional **Logistics Intelligence** module offers a wide range of options when it comes to analyzing operating figures from the logistics process and taking strategic decisions on this basis.

Data from operative processes is transferred to a separate warehouse database, where it is available for interactive and dynamic queries. Data from other systems besides ProStore® can also be integrated and queried.



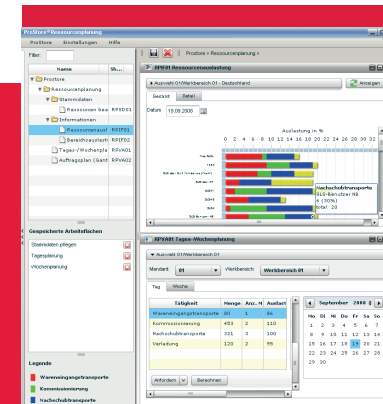
Pick by vision solutions facilitate order picking activities and make sure of more efficient working processes.



An integrated forklift control system with modern radio terminals reduces distances and optimizes workflows.



End to end scanning processes support staff, ensuring reliable logistics workflows.



Staff constitute the most valuable logistics resource. Careful and forward-looking planning ensures success.



Utilization of the logistics system is visualized in timely fashion. Any deviations from the plan show up immediately and can be corrected.



Operating figures provide transparency. The efficiency of the logistics system is displayed at the touch of a button.

Flexibility, modularity and scalability
are the crucial factors for successful logistics solutions.

Efficient resource planning is becoming increasingly important
as more stringent budget and time specifications take hold.

